

PARALLEL ARCHITECTURAL PRODUCTS

TYP. CLADDING W/ FURRING (EIFS) DETAILS

<u>DRAWING LIST</u>	<u>LATEST REVISION</u>	<u>DATE</u>
T-001 - TITLE SHEET		
S-001 - GENERAL NOTES		
S-100 - PLAN		
S-300 - FULL SECTION TYPICAL DETAILS		
S-301 - CLADDING TYPICAL DETAILS		
S-200 - ELEVATIONS		

PLAN REVISIONS		
NO.	DATE	DESCRIPTION

THE DESIGN CONCEPT, IDEAS, AND ALL ASSOCIATED INFORMATION DETICED HEREIN IS THE SOLE PROPERTY OF PVEDI ENGINEERING, ARCHITECTURE AND GEOLOGY, D.P.C. ("PVEDI"). THIS DOCUMENT HAS BEEN PREPARED SOLELY FOR THE BENEFIT OF THE PERSON(S) NAMED ABOVE AND FOR THE PROJECT NOTED ON THIS DOCUMENT. THE REPRODUCTION, ALTERATION, USE BY ANY THIRD PARTY, OR USE FOR ANY PURPOSE OTHER THAN SPECIFIED WITHOUT WRITTEN CONSENT FROM PVEDI, IS PROHIBITED AND A VIOLATION OF LAW. USE OF THIS DOCUMENT IS WITH FULL RESPONSIBILITY OF ALL USERS. PVEDI MAKES NO WARRANTIES, ELECTRONIC OR OTHERWISE, OF THIS DOCUMENT SHALL BE SUBJECT TO THE SAME COPYRIGHT CONDITIONS AS STATED ABOVE. ELECTRONIC MEDIA MAY CONTAIN ERRORS OR OMISSIONS. PVEDI MAKES NO WARRANTIES, ELECTRONIC OR OTHERWISE, OF THIS DOCUMENT. PVEDI MAKES NO WARRANTIES AS TO THE ACCURACY OF THE ELECTRONIC DATA OR THE GENERAL WORKABILITY OF THIS DOCUMENT.

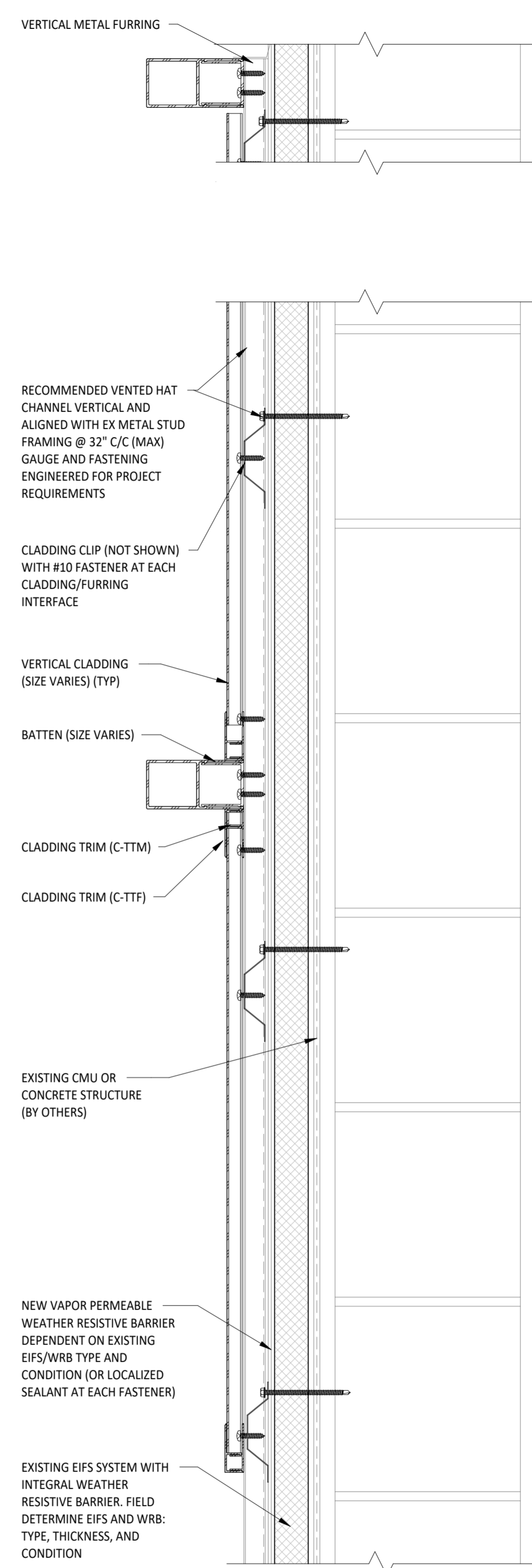
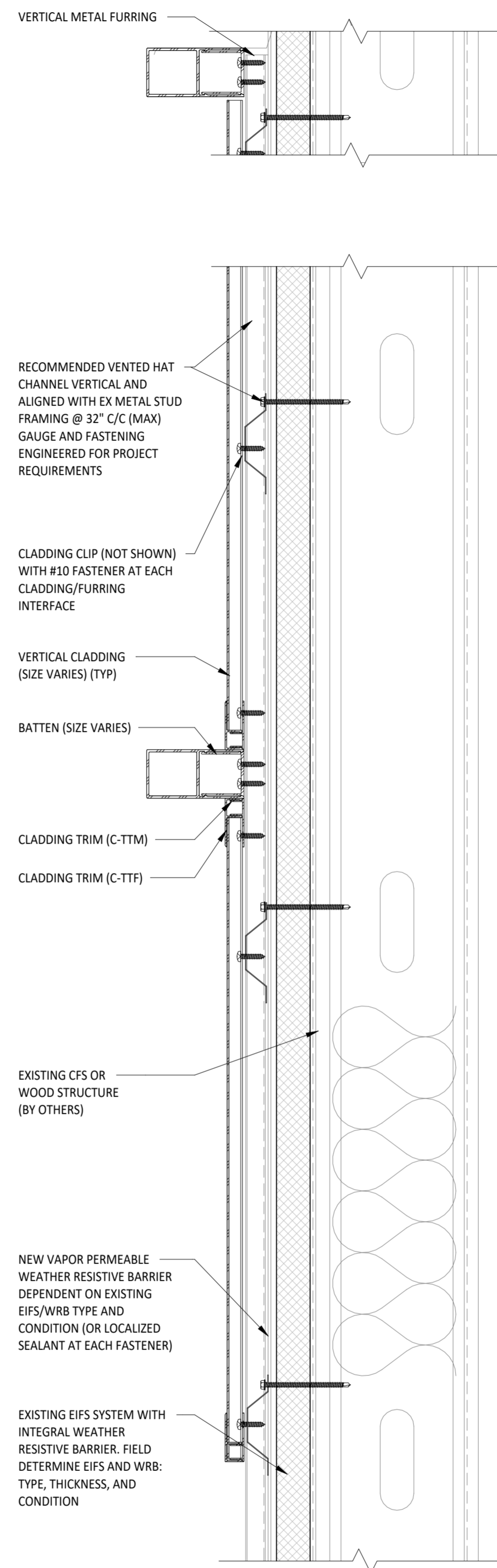
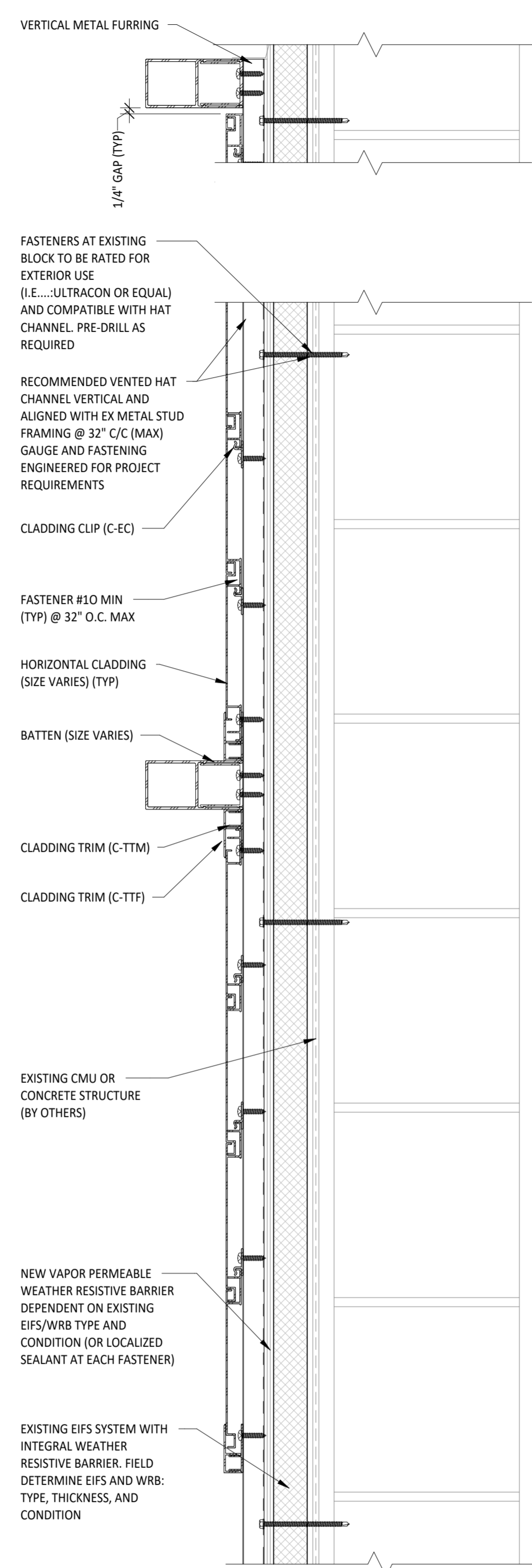
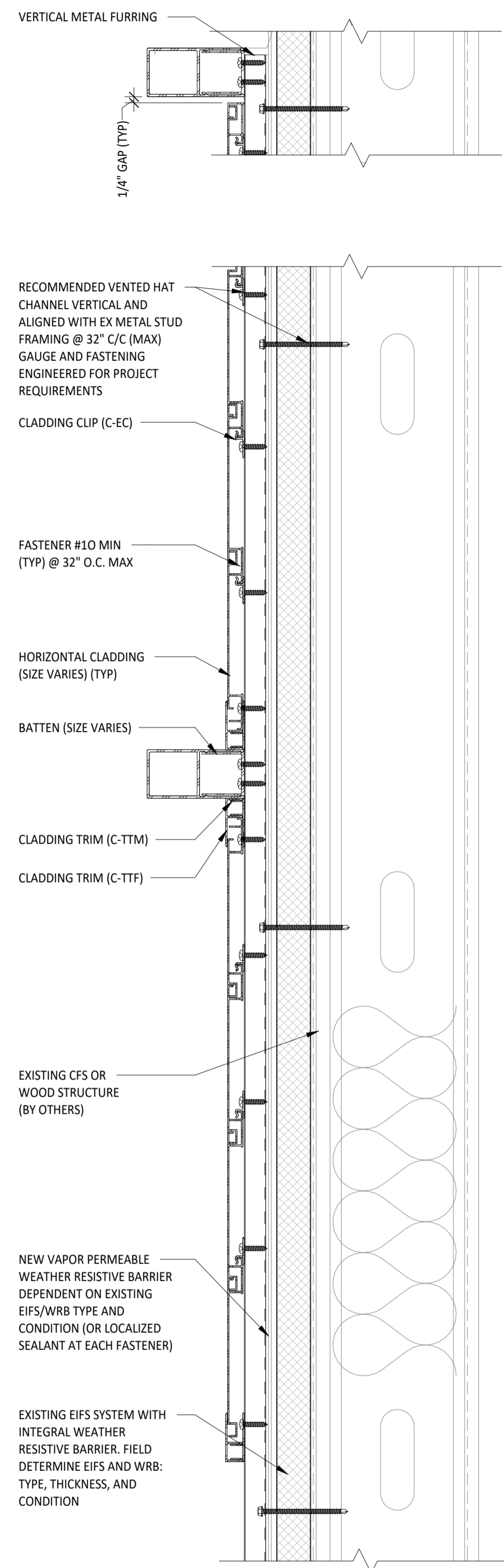
© PVEDI ENGINEERING, ARCHITECTURE AND GEOLOGY, D.P.C. 2025

PROJECT NAME:
 PARALLEL ARCHITECTURAL PRODUCTS
 TYP. CLADDING W/ FURRING (EIFS) DETAILS

PROJECT LOCATION:
 PER PROJECT
 SPECIFICATIONS

SHEET NAME:
 TITLE SHEET

SEAL & SIGNATURE	PROJECT NO: 20240131
	DRAWN BY: CJS
	CHECKED BY: DSG
	SHEET NO: T-001
	PAGE NO: 1 OF 4



1 TYP HORIZONTAL PARALLEL CLADDING AT EXISTING EIFS @ CFS/STUD W/ VERT FURRING
 3" = 1'-0"

2 TYPICAL HORIZONTAL PARALLEL CLADDING AT EXISTING EIFS @ CMU/CONCRETE W/ VERT FURRING
 3" = 1'-0"

3 TYP VERTICAL PARALLEL CLADDING AT EXISTING EIFS @ CFS/STUD W/ HORIZ FURRING
 3" = 1'-0"

4 TYP VERTICAL PARALLEL CLADDING AT EXISTING EIFS @ CMU/CONCRETE W/ HORIZ FURRING
 3" = 1'-0"

PREPARED FOR:
PARALLEL
 ARCHITECTURAL PRODUCTS
 2750 S. RARTAIN STREET ENGLEWOOD, CO 80110

ISSUED FOR: TYPICAL DETAILS

ISSUED DATE: 09/10/2025

PLAN REVISIONS

NO.	DATE	DESCRIPTION

THE DESIGN CONCEPT, IDEAL, AND ALL ASSOCIATED INFORMATION DETICED HEREIN IS THE SOLE PROPERTY OF PVEDI ENGINEERING, ARCHITECTURE AND GEOLOGY, D.P.C. ("PVEDI"). THIS DOCUMENT HAS BEEN PREPARED SOLELY FOR THE BENEFIT OF THE PERSONS NAMED ABOVE AND FOR THE PROJECT NOTED ON THIS DOCUMENT. THE REPRODUCTION, ALTERATION, USE BY ANY THIRD PARTY, OR USE FOR ANY PURPOSE OTHER THAN SPECIFIED WITHOUT WRITTEN CONSENT FROM PVEDI, IS PROHIBITED AND A VIOLATION OF LAW. USE OF THIS DOCUMENT IS WITH THE UNDERSTANDING THAT PVEDI MAKES NO WARRANTY, REPRESENTATION, OR GUARANTEE OF ANY KIND, AND THAT THE USER OF THIS DOCUMENT SHALL BE SUBJECT TO THE SAME COPYRIGHT CONDITIONS AS STATED ABOVE. ELECTRONIC MEDIA MAY CONTAIN ERRORS OR OMISSIONS. PVEDI MAKES NO WARRANTY, REPRESENTATION, OR GUARANTEE AS TO THE ACCURACY OF THE ELECTRONIC DATA OR THE GENERAL WORKABILITY OF THIS DOCUMENT.

© PVEDI ENGINEERING, ARCHITECTURE AND GEOLOGY, D.P.C. 2025

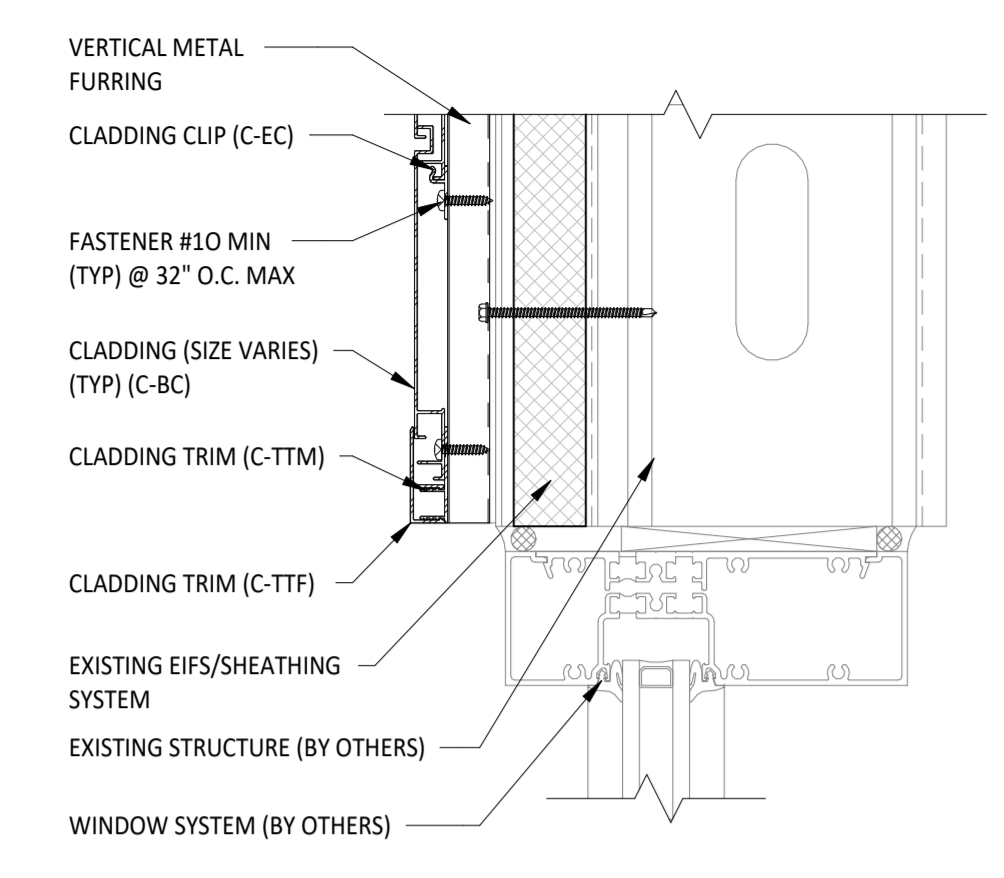
PROJECT NAME:
 PARALLEL ARCHITECTURAL PRODUCTS
 TYP. CLADDING W/ FURRING (EIFS) DETAILS

PROJECT LOCATION:
 PER PROJECT SPECIFICATIONS

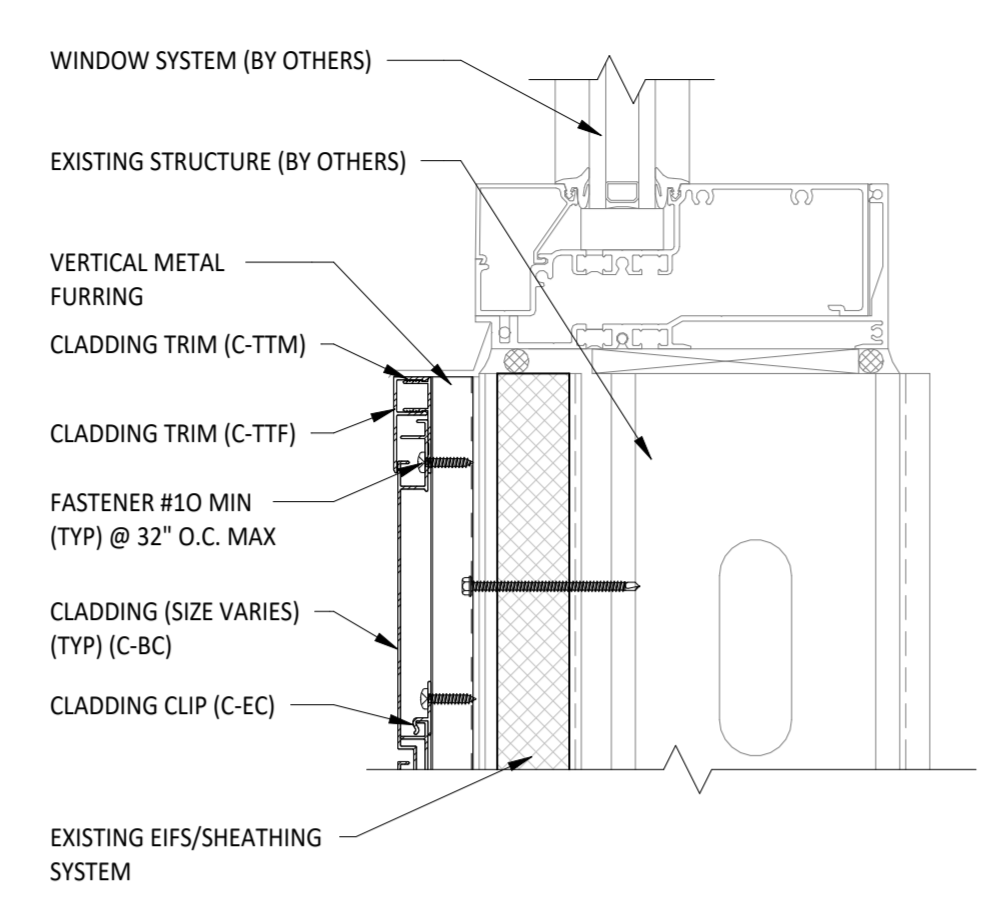
SHEET NAME:
 FULL SECTION TYPICAL DETAILS

SEAL & SIGNATURE	PROJECT NO: 20240131
	DRAWN BY: CJS
	CHECKED BY: DSG
	SHEET NO: S-300
	PAGE NO: 3 OF 4

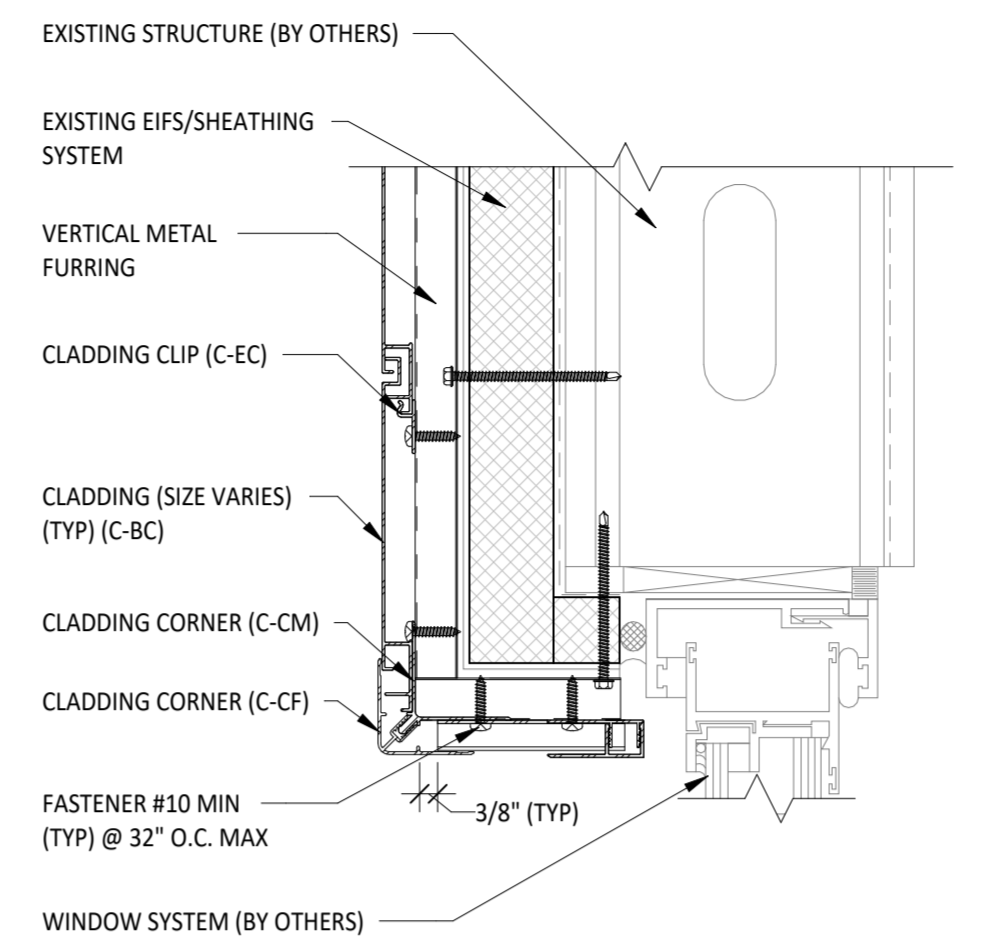
NOTE:
 ALL DETAILS FOR HORIZONTAL CLADDING/BATTENS WITH VERTICAL FURRING.
 VERTICAL CLADDING/BATTENS WITH HORIZONTAL FURRING IS "SIMILAR".



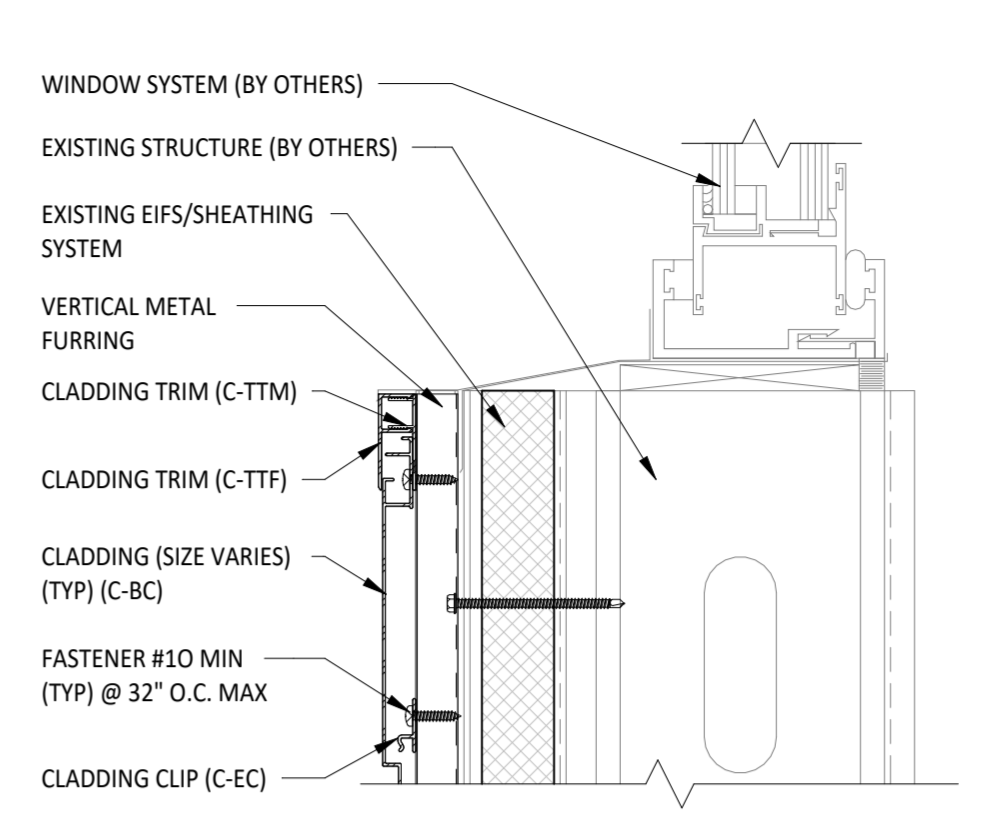
1 TYPICAL FLUSH WINDOW HEAD DETAIL
 3" = 1'-0"



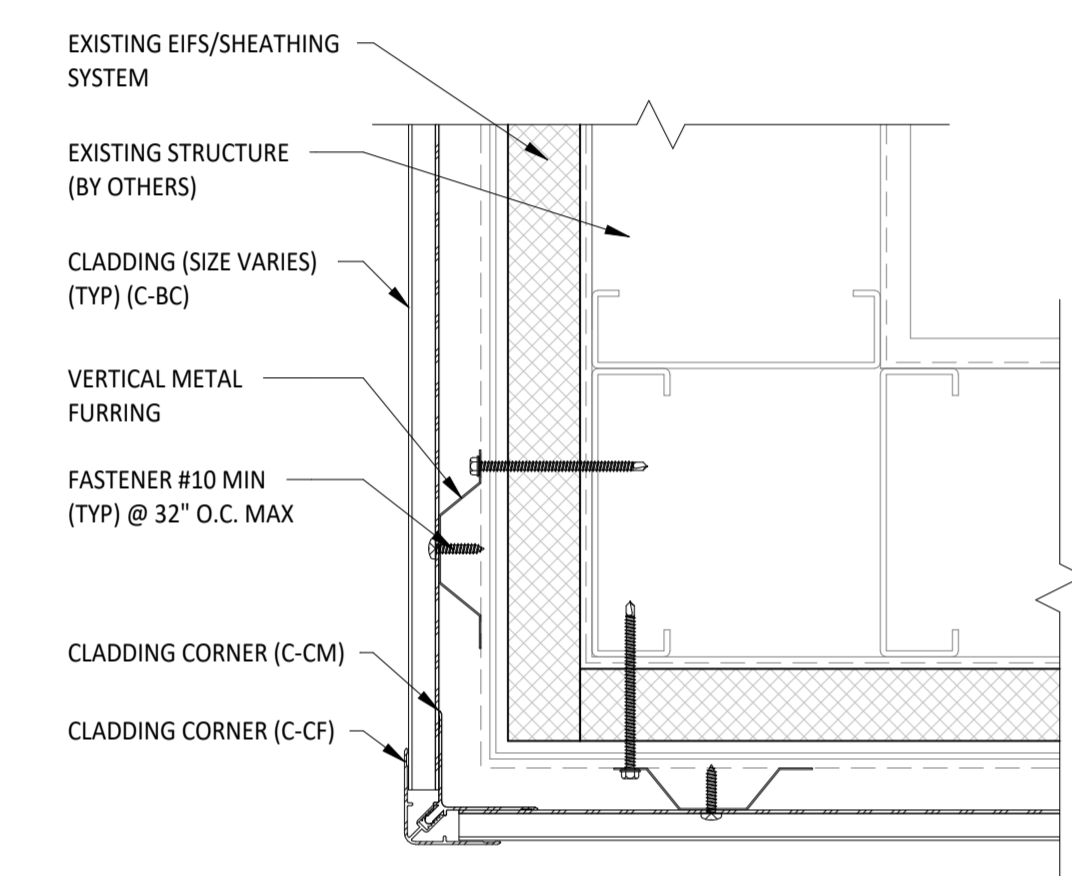
2 TYPICAL FLUSH WINDOW SILL DETAIL
 3" = 1'-0"



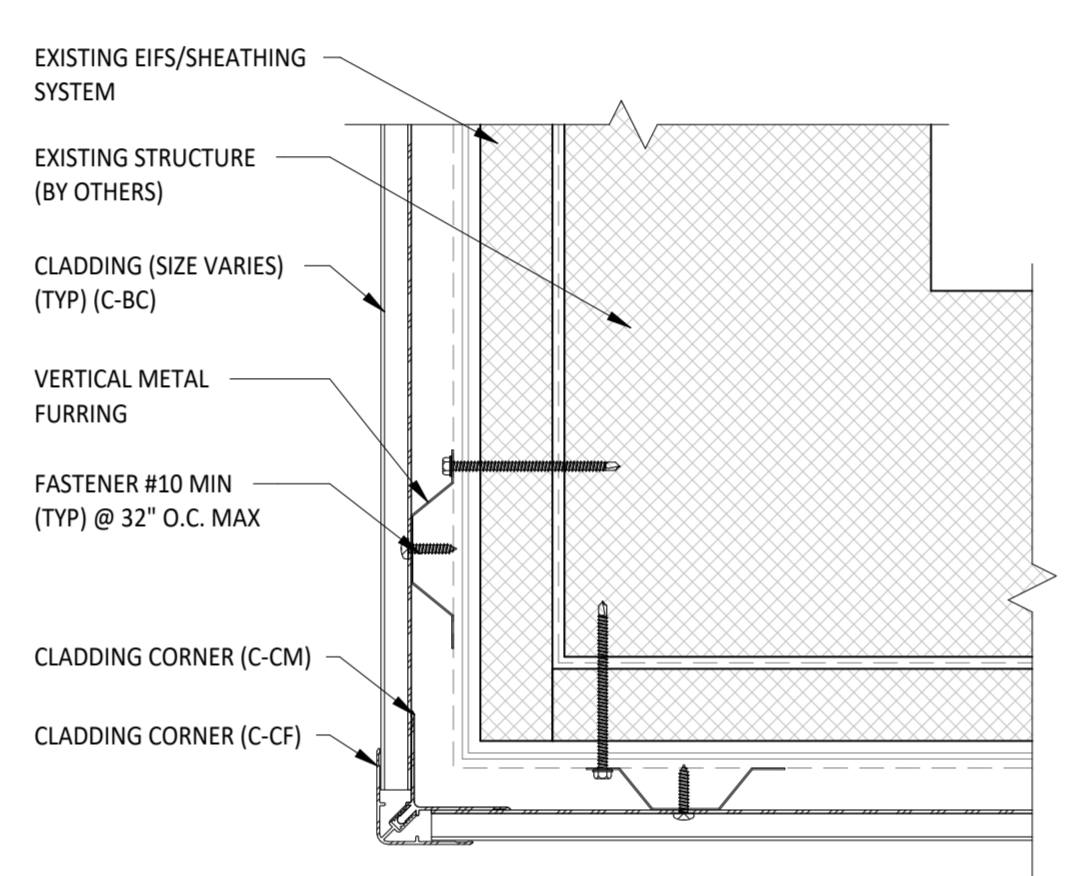
3 TYPICAL RECESSED WINDOW HEAD DETAIL
 3" = 1'-0"



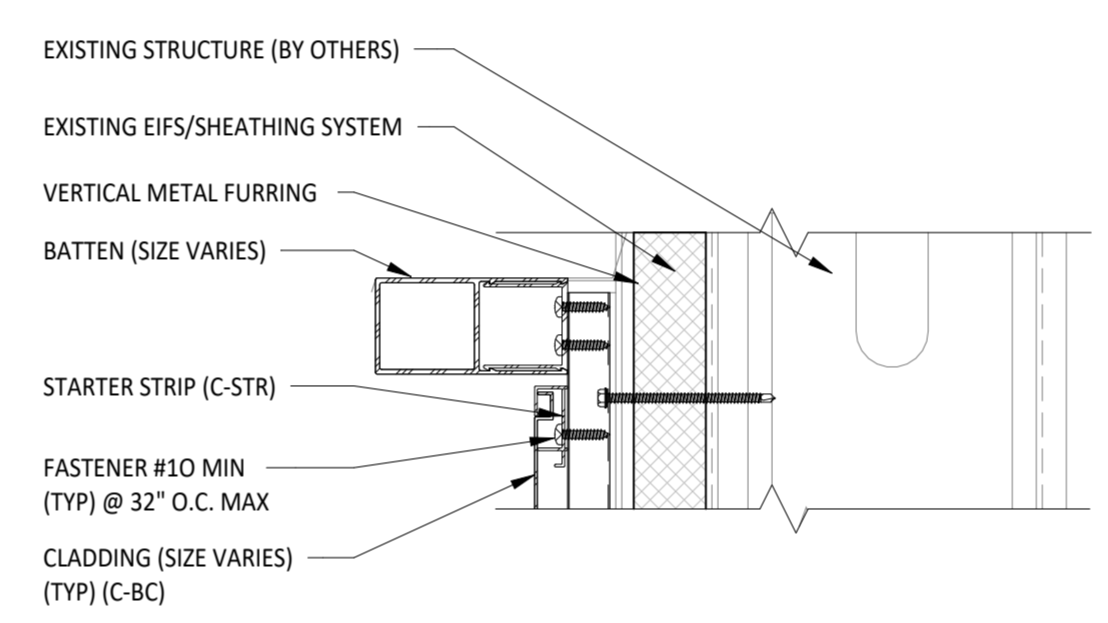
4 TYPICAL RECESSED WINDOW SILL DETAIL
 3" = 1'-0"



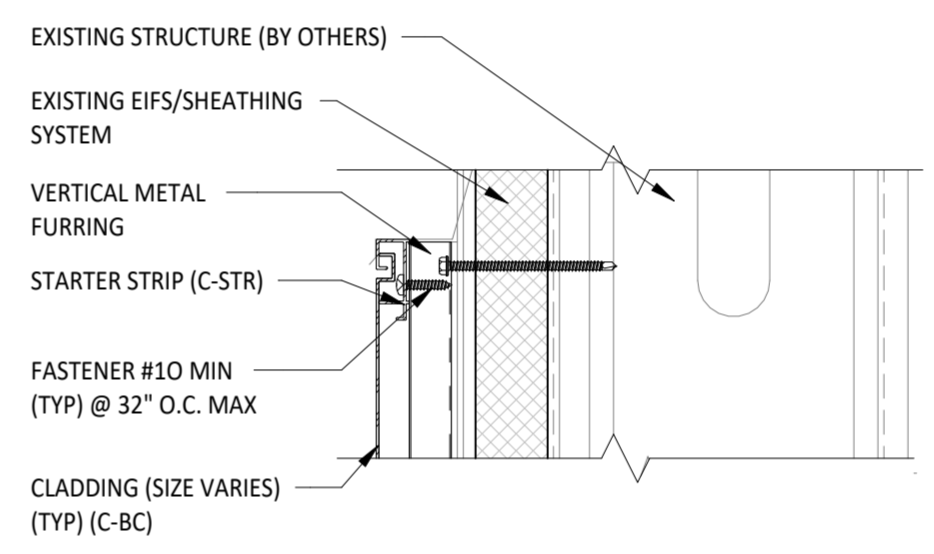
5 TYPICAL PARALLEL OVER EIFS & CFS CORNER DETAIL PLAN VIEW
 3" = 1'-0"



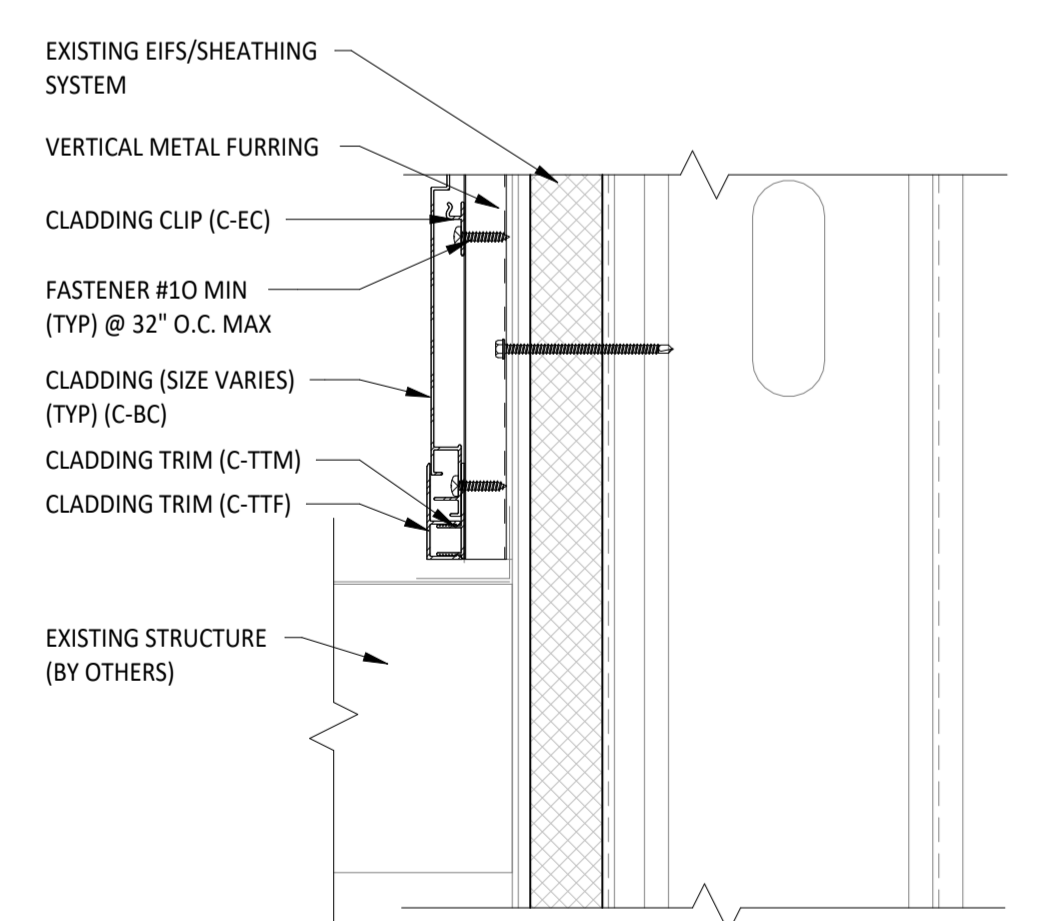
6 TYPICAL PARALLEL OVER EIFS & CMU CORNER DETAIL PLAN VIEW
 3" = 1'-0"



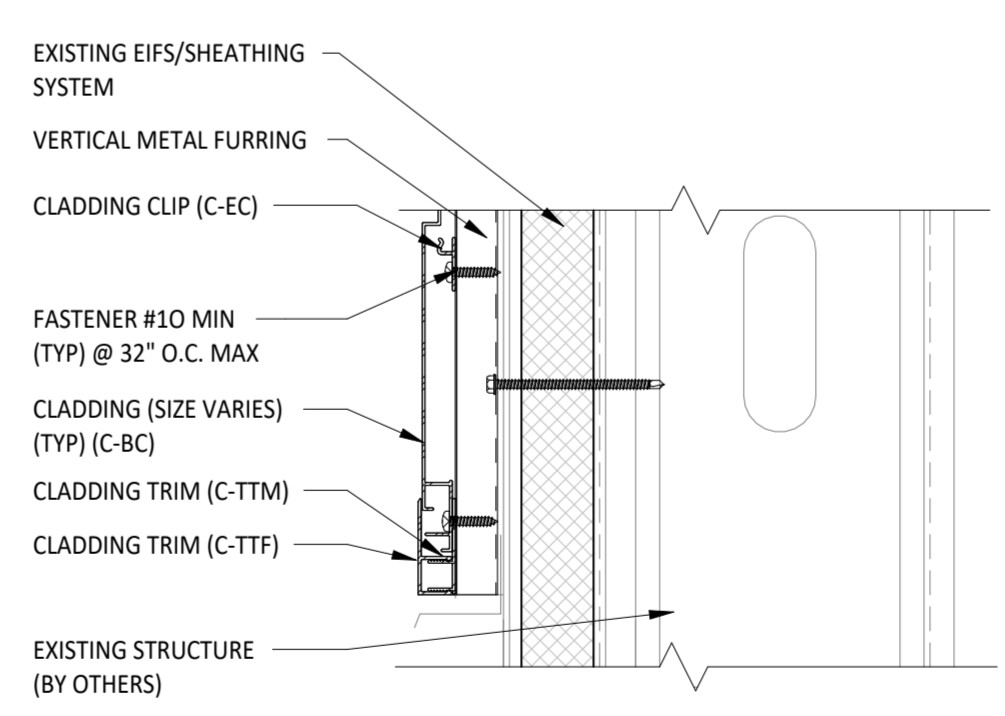
7 TYPICAL TOP CAP BATTEN DETAIL
 3" = 1'-0"



8 TYPICAL TOP OF CLADDING DETAIL
 3" = 1'-0"



9 TYPICAL CLADDING AT ROOF/CANOPY DETAIL
 3" = 1'-0"



10 TYPICAL CLADDING BASE DETAIL
 3" = 1'-0"

PREPARED FOR:
PARALLEL
 ARCHITECTURAL PRODUCTS
 2750 S. RARTAIN STREET ENGLEWOOD, CO 80110

ISSUED FOR:
 TYPICAL DETAILS

ISSUED DATE:
 09/10/2025

PLAN REVISIONS

NO.	DATE	DESCRIPTION

THE DESIGN CONCEPT, IDEAS, AND ALL ASSOCIATED INFORMATION IDENTIFIED HEREIN IS THE SOLE PROPERTY OF PVEDI ENGINEERING, ARCHITECTURE AND GEOLOGY, D.P.C. ("PVEDI"). THIS DOCUMENT HAS BEEN PREPARED SOLELY FOR THE BENEFIT OF THE PERSONS NAMED ABOVE AND FOR THE PROJECT NOTED ON THIS DOCUMENT. THE REPRODUCTION, ALTERATION, USE BY ANY THIRD PARTY, OR USE FOR ANY PURPOSE OTHER THAN SPECIFIED WITHOUT WRITTEN CONSENT FROM PVEDI, IS PROHIBITED AND A VIOLATION OF LAW. USE OF THIS DOCUMENT IS WITH THE UNDERSTANDING THAT PVEDI MAKES NO WARRANTY AS TO THE ACCURACY OF THE ELECTRONIC DATA OR THE GENERAL WORKABILITY OF THIS DOCUMENT.

© PVEDI ENGINEERING, ARCHITECTURE AND GEOLOGY, D.P.C. 2025

PROJECT NAME:
 PARALLEL ARCHITECTURAL PRODUCTS
 TYP. CLADDING W/ FURRING (EIFS) DETAILS

PROJECT LOCATION:
 PER PROJECT SPECIFICATIONS

SHEET NAME:
 CLADDING TYPICAL DETAILS

SEAL & SIGNATURE	PROJECT NO: 20240131
	DRAWN BY: CJS
	CHECKED BY: DSG
	SHEET NO: S-301
	PAGE NO: 4 OF 4