



PARALLEL  
ARCHITECTURAL PRODUCTS



Parallel Architectural Products

# CORPORATE BRANDS CATALOG

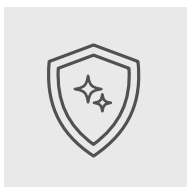
[www.parallelap.com](http://www.parallelap.com)



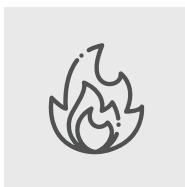


## Craft Enduring Impressions: **Timeless Excellence in Design**

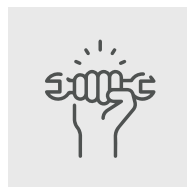
It's no secret that every great commercial building design starts with choosing the right materials. From durability to aesthetics to installation requirements, there's a lot to consider. At Parallel Architectural Products, we prioritize creating a wide array of wood-look aluminum architectural systems that strike the perfect balance of **beauty, quality and simplicity**.



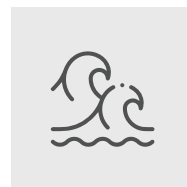
Resists Warping  
+ Cracking



Non-Combustible  
+ Fire Safe



Lightweight  
+ Easy to Install



Marine Grade  
Material



Freeze + Frost  
Resistant





9+

systems designed  
for use in customary  
building applications

50+

woodgrain and solid  
finishes, powder-coated  
for strength



Scan to view our  
entire color palette,  
order samples, and  
learn more.

[parallelap.com/colors](https://parallelap.com/colors)

## Beauty and Function, Backed by a **Strong Warranty**

We know that the exterior of your building is your customer's first impression, so it's important that it reflects that strength of your brand, beyond just the grand opening. That's why Parallel is proud to provide a warranty that's as reliable as our products. Our warranty covers any buckling, corrosion or other defects, as long as the products have been installed to Parallel's specifications and maintained properly. Additionally, we provide a 15-year warranty for the finish, including cracking, color change and more, so you can be confident that your most important projects will stay looking new for longer.





## Exterior Cladding

Contemporary, versatile + designed for easy installation



When designing the exterior of your next project, we know that selecting your cladding material is one of the first steps. At Parallel, we created our cladding system with that in mind, ensuring that it's not only simple to implement due to its interlocking install method, but that you also have ample opportunities to customize your design. From color to size and installation orientation, our cladding can be tailored to meet your needs.

### SIZING

4", 6", 8", 12" boards

All **20' lengths** for higher material yields

### COLORS

**50+** woodgrain + solid colors always stocked

Custom colors + color matching available, contact our team for details.

### INSTALLATION

Top-down and bottom-up installation

Horizontal and vertical orientations

No-reveal and 5/8" reveal options

Scan the QR code above or visit [parallelap.com/cladding](https://parallelap.com/cladding) to view all **system components, specifications, technical resources** and more.





### **Parallel Pro Tip:** Choose Class A Fire Rated Products

Parallel's aluminum products boast a Class A Fire Rating, offering top-tier fire protection. This rating ensures our materials don't accelerate flame spread or produce excessive smoke, enhancing safety for people and the environment. While crucial for cladding, this feature is equally vital for exterior applications like fencing and gates. Unlike wood, which can fuel fires, our aluminum products provide superior safety in outdoor structures.

***Browse our fencing and gate systems at [parallelap.com/products](https://www.parallelap.com/products).***





# Battens

Create a captivating facade, functional screen + more



Parallel aluminum battens enhance both exterior and interior designs by creating a unique focal point that outlasts wood, composite, or vinyl alternatives. Our two-part snap-together system comes in 2" and 1" options, complemented by self-mating battens that can be used to create a sleek flat-lay appearance. These battens install without visible fasteners, offering a sophisticated way to elevate façade designs and create stylish screening solutions for both interior and exterior applications.

## SIZING

### Two-Part

1" x 3", 1" x 4", 1" x 6", 2" x 2", 2" x 4",  
2" x 6", 2" x 8"

### Self-Mating

2" x 2", 2" x 4", 2" x 6", 2" x 8"

All **20' lengths** for higher material yields

## COLORS

**50+** woodgrain + solid colors  
always stocked

Custom colors + color  
matching available, contact  
our team for details.

## INSTALLATION

Our battens feature a two-part snap-together system and a self-mating system with brackets, both incorporating concealed fastening for a seamless finish.

Scan the QR code above or visit [parallelap.com/battens](https://parallelap.com/battens) to view all **system components, specifications, technical resources** and more.





### **Parallel Pro Tip:** Communicate Your Brand Through Color

Color plays a vital role in branding, setting the mood and atmosphere for customers and visitors. Selecting the right colors for your building materials is crucial in reinforcing your message and attracting patrons. Parallel not only offers an ever-expanding palette of over 40 woodgrain and solid colors, we also provide color matching and custom color creation to perfectly align with your project's vision.

*Explore our palette at [parallelap.com/colors](https://www.parallelap.com/colors) or reach out to us about custom options.*





## Gates + Enclosures

Enhance concealment, safety + aesthetic appeal



Parallel Architectural Products offers gate and enclosure systems that seamlessly blend practicality with aesthetics. Install gates on existing structures or maximize potential by combining them with enclosures or our fence system. Our versatile solutions range from pedestrian gates to trash and utility enclosures, providing durable and stylish options for a wide array of commercial settings. These systems perfectly balance functionality and design, enhancing the appeal and utility of any space.

### SIZING

4" x 4", 2.5" x 2.5", 2.5" x 1" posts  
4", 6" slats  
Large + small gate frames

All **20' lengths** for higher material yields

### COLORS

**50+** woodgrain + solid colors  
always stocked

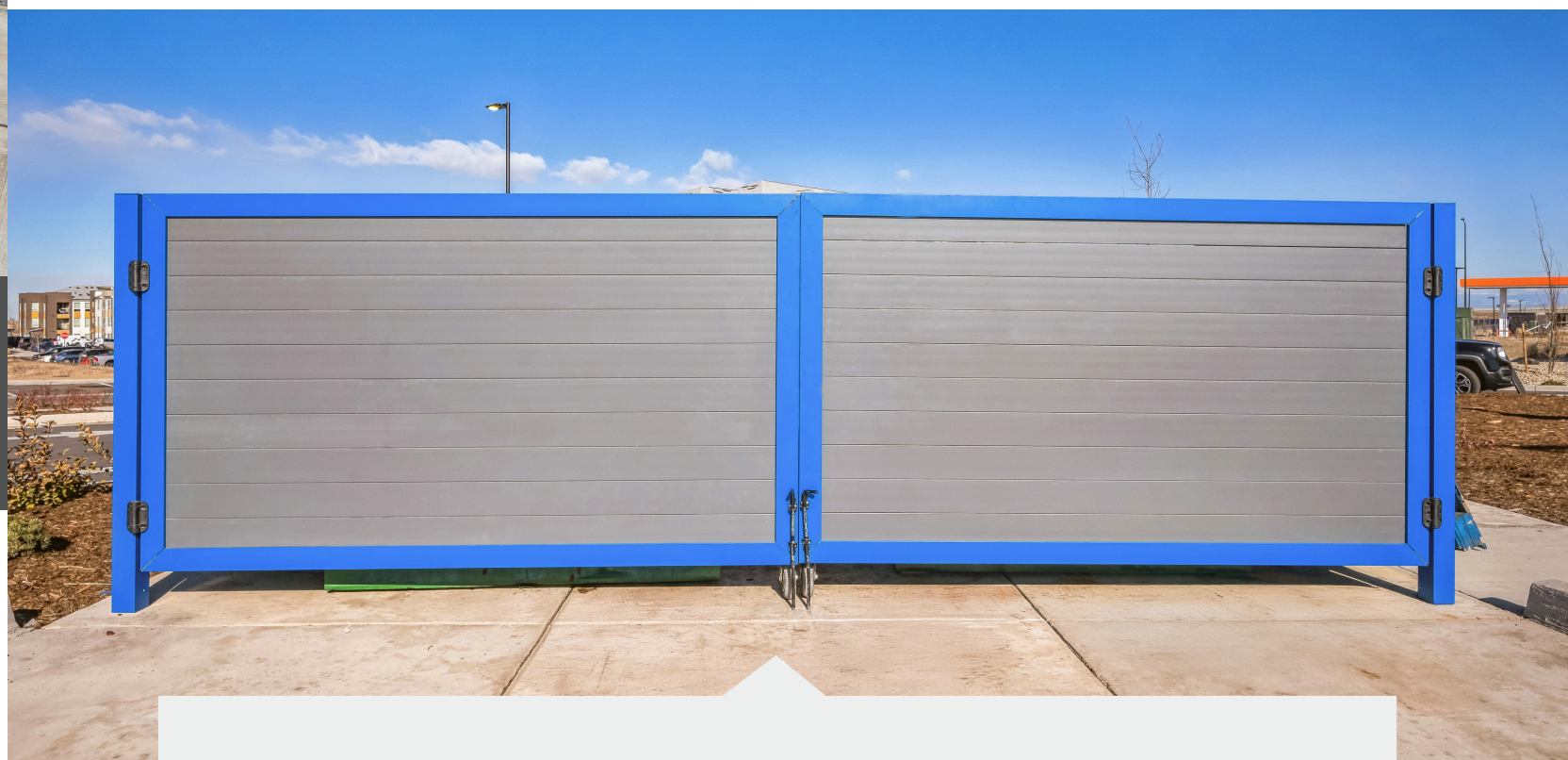
Custom colors + color  
matching available, contact  
our team for details.

### INSTALLATION

Mix-and-match our suite of  
posts and slats, pairing your  
choices with gate frames,  
sliding gate options, drop bolts  
and other accessories.

Scan the QR code above or visit [parallelap.com/gates-enclosures](https://parallelap.com/gates-enclosures) to view all **system components, specifications, technical resources** and more.





### **Parallel Pro Tip:** Don't Compromise Style for Strength

When selecting materials for a trash or utility enclosure in your project, it's crucial to choose something that can withstand the wear and tear of high-traffic, function-first areas. However, it's equally important to select an attractive option that doesn't detract from your overall design efforts. This is where Parallel's wood-look aluminum products for gates and enclosures shine: our expertly powder-coated systems resist harsh weather and heavy use while maintaining their visual appeal and structural integrity for years to come.

***Learn more about what makes our products last at [parallelap.com/our-aluminum](https://www.parallelap.com/our-aluminum).***





## Finishing Touches: Pergolas, Railings + More

Add the final details to your design with our full line of aluminum systems

### PERGOLAS

#### Long-Lasting Shade Solutions

Enhance your project's outdoor space with the addition of an aluminum pergola, adding charm, functionality, and usable square footage. Customize your design using our post and batten profiles to create a structure that seamlessly integrates with your project's architecture. Whether you're envisioning a cozy dining area, a shaded lounge, or a versatile recreation area, a Parallel pergola can help you achieve it.

[parallelap.com/pergolas](https://parallelap.com/pergolas)

### RAILINGS

#### Durability, Safety + Style

Railings are essential for safety on staircases, patios, and decks. It's crucial to choose a material that can withstand daily use and varying weather conditions. Our aluminum's inherent strength, combined with our precise powder-coating process, results in a railing system that's built to last. Plus, customize your design using our range of post and slat profiles, ensuring it complements your overall project.

[parallelap.com/railings](https://parallelap.com/railings)





## TIMELESS ALUMINUM, ENDLESS POSSIBILITIES



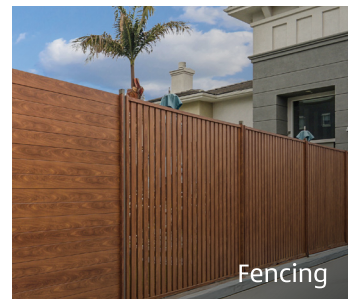
Cladding



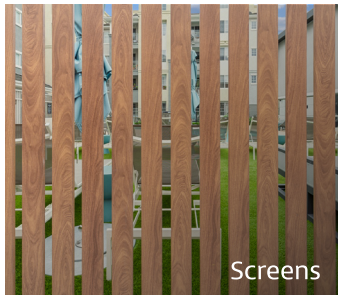
Soffit



Battens



Fencing



Screens



Railing



Gates + Enclosures



Pergolas

Explore all product applications now at [parallelap.com/products](https://parallelap.com/products)





PARALLEL  
ARCHITECTURAL PRODUCTS

# Elevating Design Through **Sustainable Aluminum Systems**

At Parallel Architectural Products,  
sustainability is at the core of our mission.

Our aluminum products are not only durable and long-lasting but also **100% recyclable, significantly reducing environmental impact**. We manufacture our products in our state-of-the-art facility in Englewood, Colorado, ensuring responsible production practices. Our powder-coated finishes are environmentally friendly, containing **no volatile organic compounds (VOCs) or chromates**, and requiring minimal maintenance over their lifetime.

By choosing Parallel's products, you're selecting materials that **contribute to green building initiatives** and **support a more sustainable future** in the construction industry.



Scan the code to access product specifications, request samples, download technical resources and product literature, and connect with our expert team.

