

1" 2-PART BATTEN SYSTEM



General Specifications:

Composition:

6063-T5 Aluminum Extrusions

Coating:

Interpon Powder Coat AAMA 2604

Finish:

Wood Grain Sublimation AAMA 2604

Fire:

ASTM E84

Warranty:

15 Years

Benefits:

100% Recyclable

Made in USA

Features:

Assembly:

Two-Piece Profile(s) and End Cap(s)

Orientations:

Horizontal, Vertical, Diagonal

Sizes:

1x3", 1x4", and 1x6"

20' Standard Production Lengths

Design:

Two-Piece, Male + Female Tubes w/ concealed fasteners

Colors:

35+ Woodgrain Colors, 10+ Solid Colors

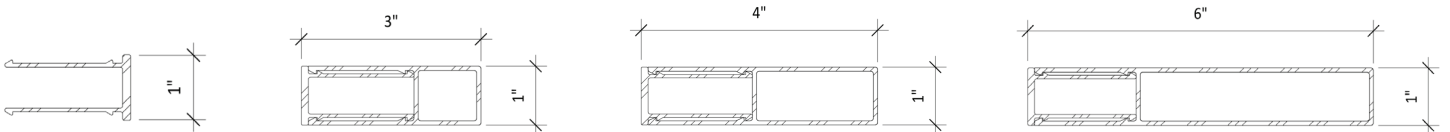
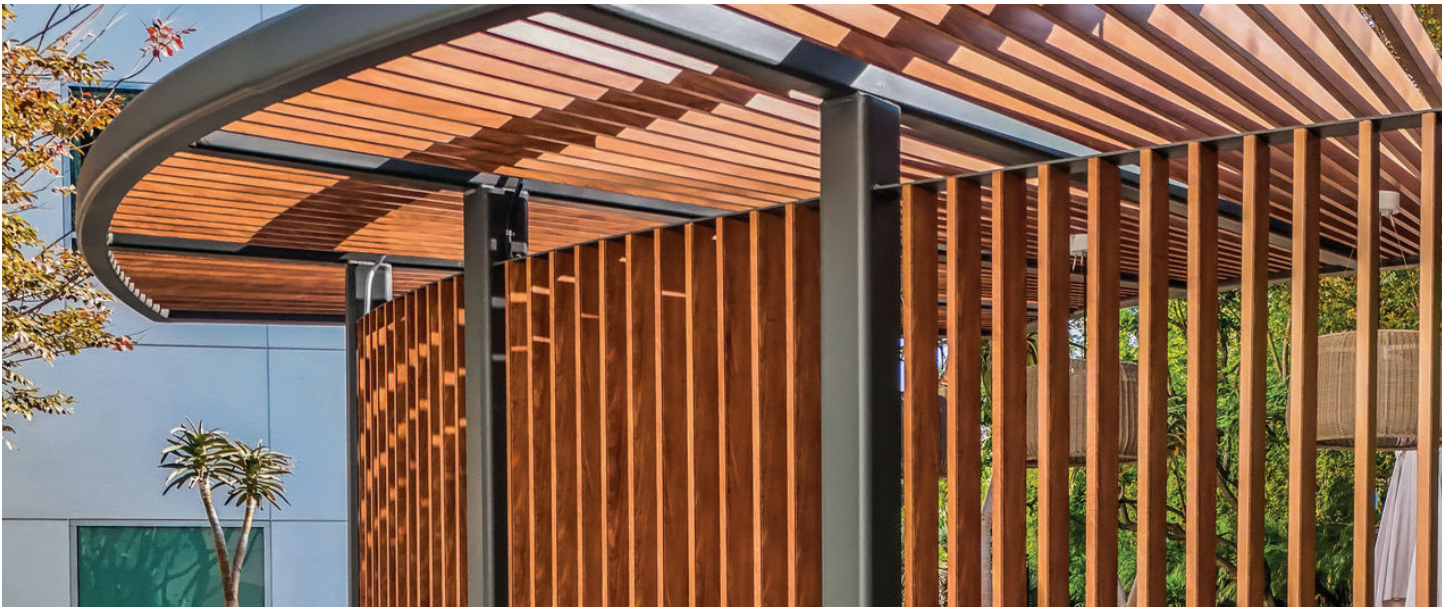
Custom color creation + color matching available

Installation:


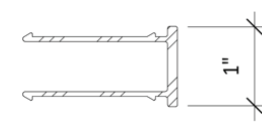

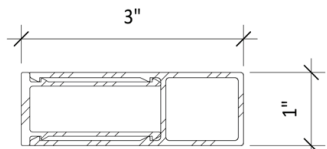

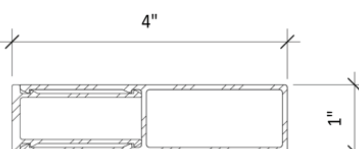

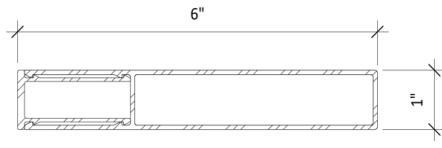
Cut & Fasten (No Pre-Drilling Required)

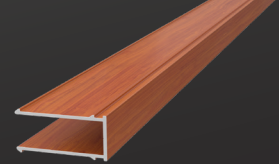
Additional Systems:

Cladding, Soffit, Fencing, Screening, Gates, Railings, Enclosures, Pergolas





		<p>B-1x2M</p>	<p>1" Batten Base Male 1" x 2" x 20'</p>
		<p>B-1x3F</p>	<p>1" x 3" Batten Female 1" x 3" x 20'</p>
		<p>B-1x4F</p>	<p>1" x 4" Batten Female 1" x 4" x 20'</p>
		<p>B-1x6F</p>	<p>1" x 6" Batten Female 1" x 6" x 20'</p>



1" BATTEN BASE MALE B-1X2M STOCK ITEM

General Specifications:

Imperial Size:
1" x 2" x 20'

Material Thickness:
0.059" / 1.5mm

Applications:
Facades / Screening / Pergola

Extrusion Weight:
6.62 lbs

Weight per LF:
0.331 lbs

Extrusion Coverage:
10' SqFt

Case Qty:
80x Pieces

Features:

Assembly:

Two-Piece Profile(s) and End Cap(s)

Install Orientations:

Horizontal, Vertical, Diagonal

Dimensions:

20' Standard Production Lengths

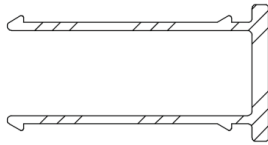
Design:

Two-Piece, Male + Female Tubes w/ concealed fasteners

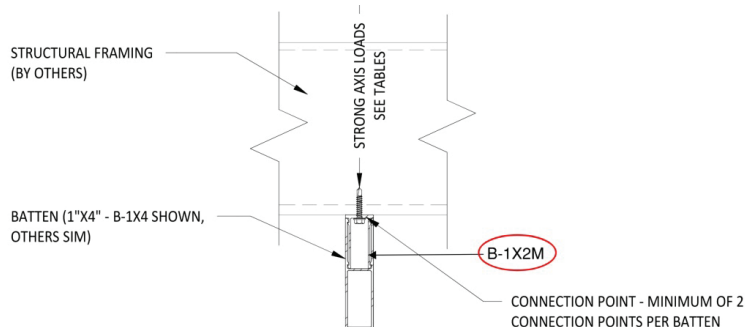
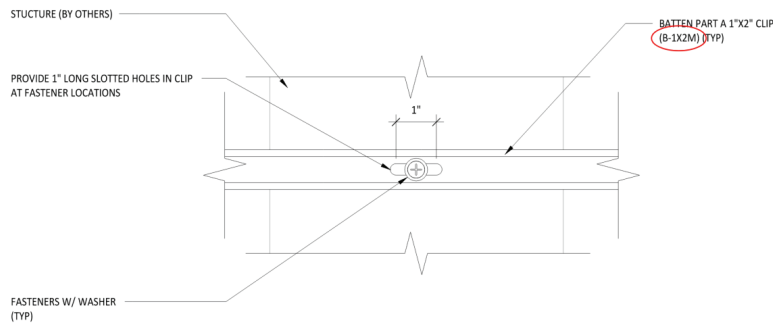
Colors:

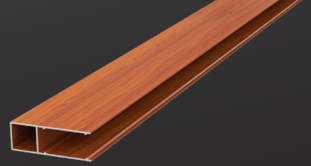
35+ Woodgrain Colors, 10+ Solid Colors

Custom color creation + color matching available



B-1x2M mates with any
1" Batten Female 1x3,
1x4 or 1x6





1" X 3" BATTEN FEMALE B-1X3F STOCK ITEM

General Specifications:

Imperial Size:
1" x 3" x 20'

Material Thickness:
0.059" / 1.5mm

Applications:
Facades / Screening / Pergola

Extrusion Weight:
11.36 lbs

Weight per LF:
0.568 lbs

Case Qty:
54x Pieces

Features:

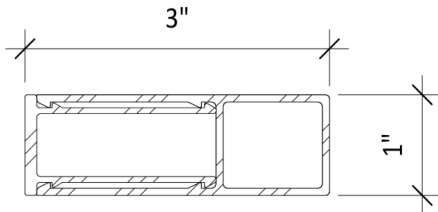
Assembly:
Two-Piece Profile(s) and End Cap(s)

Install Orientations:
Horizontal, Vertical, Diagonal

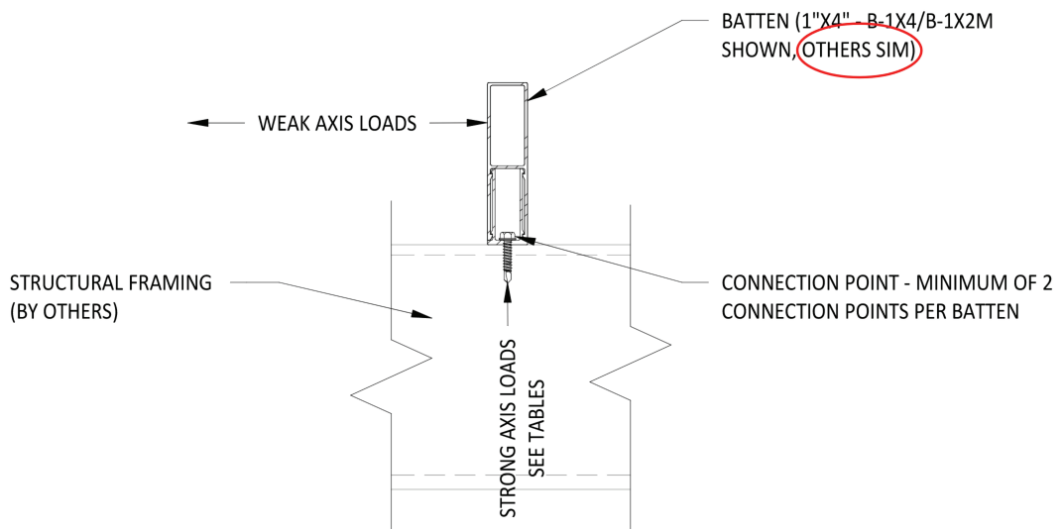
Dimensions:
20' Standard Production Lengths

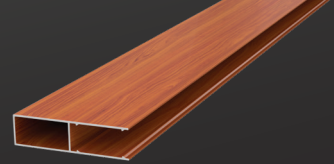
Design:
Two-Piece, Male + Female Tubes w/ concealed fasteners

Colors:
35+ Woodgrain Colors, 10+ Solid Colors
Custom color creation + color matching available



B-1x3F mates with
1" Batten Male (B-1x2M)





1" X 4" BATTEN FEMALE B-1X4F STOCK ITEM

General Specifications:

Imperial Size:
1" x 4" x 20'

Material Thickness:
0.071" / 1.8mm

Applications:
Facades / Screening / Pergola

Extrusion Weight:
15.82 lbs

Weight per LF:
0.791 lbs

Case Qty:
30x Pieces

Features:

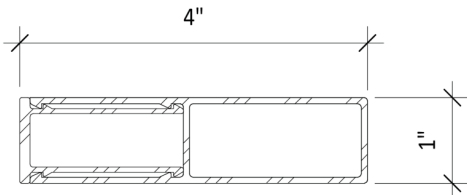
Assembly:
Two-Piece Profile(s) and End Cap(s)

Install Orientations:
Horizontal, Vertical, Diagonal

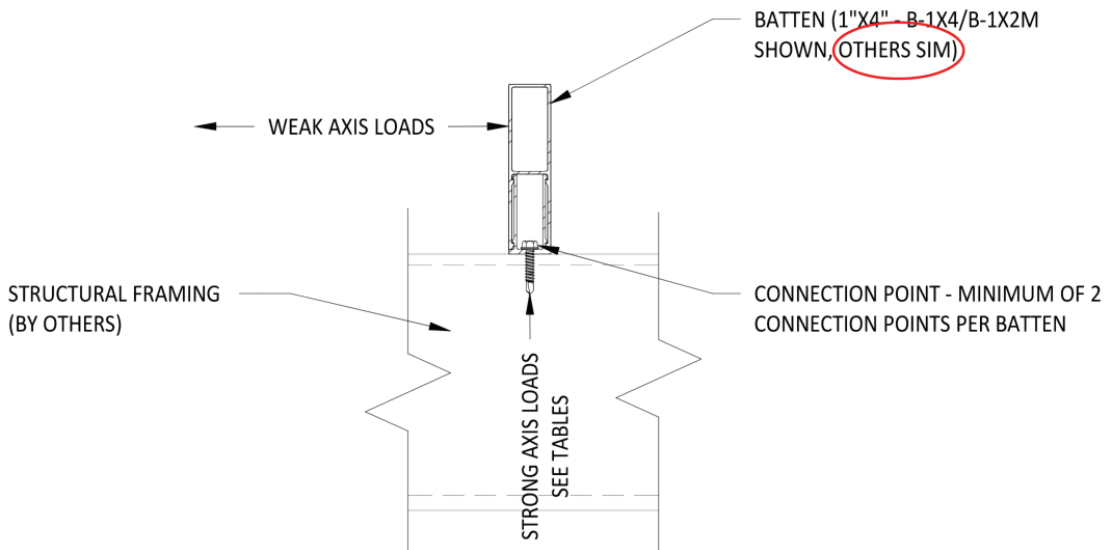
Dimensions:
20' Standard Production Lengths

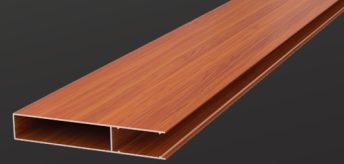
Design:
Two-Piece, Male + Female Tubes w/ concealed fasteners

Colors:
35+ Woodgrain Colors, 10+ Solid Colors
Custom color creation + color matching available



B-1x4F mates with
1" Batten Male (B-1x2M)





1" X 6" BATTEN FEMALE B-1X6F STOCK ITEM

General Specifications:

Imperial Size:
1" x 6" x 20'

Material Thickness:
0.071" / 1.8mm

Applications:
Facades / Screening / Pergola

Extrusion Weight:
22.66 lbs

Weight per LF:
1.103 lbs

Case Qty:
24x Pieces

Features:

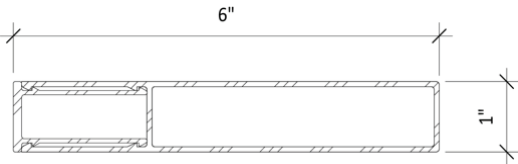
Assembly:
Two-Piece Profile(s) and End Cap(s)

Install Orientations:
Horizontal, Vertical, Diagonal

Dimensions:
20' Standard Production Lengths

Design:
Two-Piece, Male + Female Tubes w/ concealed fasteners

Colors:
35+ Woodgrain Colors, 10+ Solid Colors
Custom color creation + color matching available



B-1x6F mates with
1" Batten Male (B-1x2M)

