

1" 2-PART BATTEN SYSTEM



General Specifications:

Composition:

6063-T5 Aluminum Extrusions

Coating:

Interpon Powder Coat AAMA 2604

Finish:

Wood Grain Sublimation AAMA 2604

Fire:

ASTM E84

Warranty:

15 Years

Benefits:

100% Recyclable

Made in USA

Features:

Assembly:

Two-Piece Profile(s) and End Cap(s)

Orientations:

Horizontal, Vertical, Diagonal

Sizes:

1x3", 1x4", and 1x6"

20' Standard Production Lengths

Design:

Two-Piece, Male + Female Tubes w/ concealed fasteners

Colors:

37+ Woodgrain Colors, 13+ Solid Colors

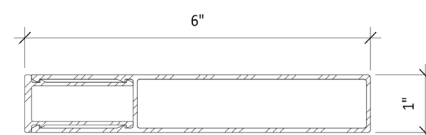
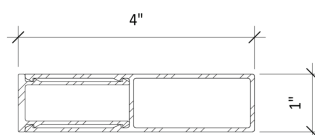
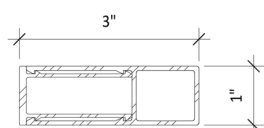
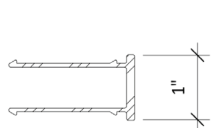
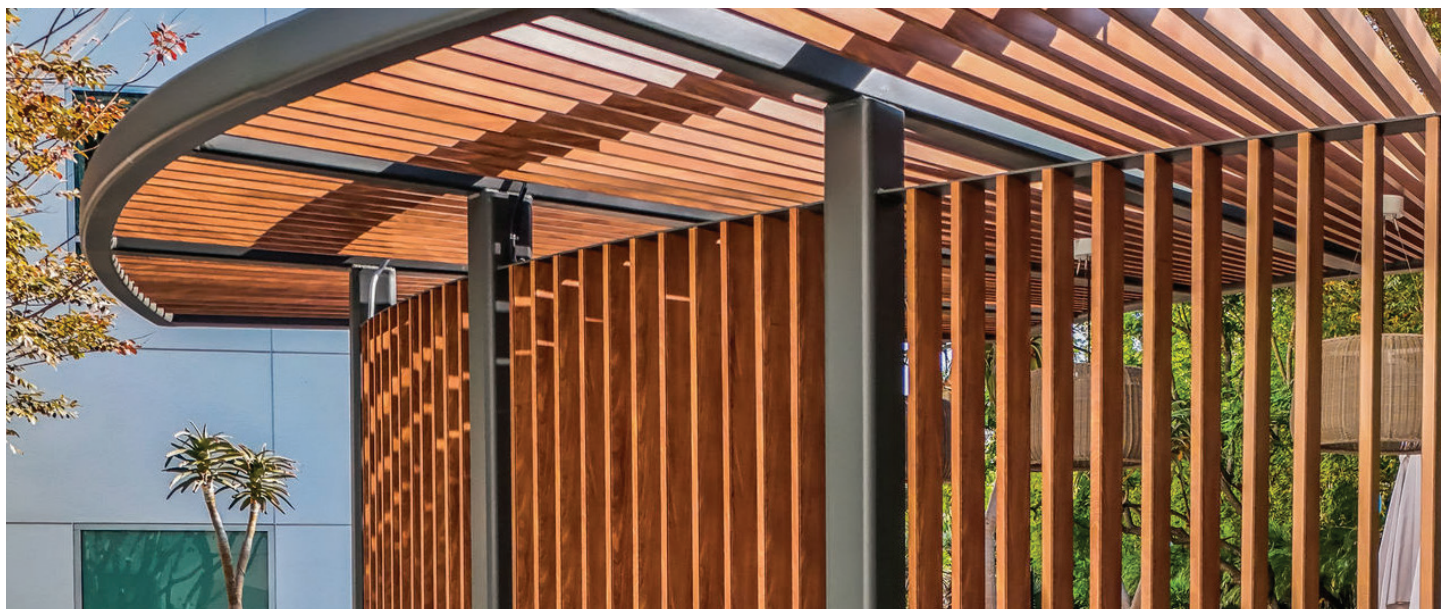
Custom color creation + color matching available

Installation:

Cut & Fasten (No Pre-Drilling Required)

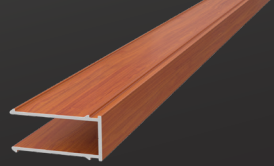
Additional Systems:

Cladding, Soffit, Fencing, Screening, Gates, Railings, Enclosures, Pergolas





| | | | |
|--|--|---------------|--|
| | | B-1x2M | 1" Batten Base Male 1" x 2" x 20' |
| | | B-1x3F | 1" x 3" Batten Female 1" x 3" x 20' |
| | | B-1x4F | 1" x 4" Batten Female 1" x 4" x 20' |
| | | B-1x6F | 1" x 6" Batten Female 1" x 6" x 20' |



1" BATTEN BASE MALE B-1X2M STOCK ITEM

General Specifications:

Imperial Size:
1" x 2" x 20'

Material Thickness:
0.059" / 1.5mm

Applications:
Facades / Screening / Pergola

Extrusion Weight:
6.62 lbs

Weight per LF:
0.331 lbs

Extrusion Coverage:
10' SqFt

Case Qty:
80x Pieces

Features:

Assembly:

Two-Piece Profile(s) and End Cap(s)

Install Orientations:

Horizontal, Vertical, Diagonal

Dimensions:

20' Standard Production Lengths

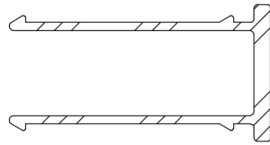
Design:

Two-Piece, Male + Female Tubes w/ concealed fasteners

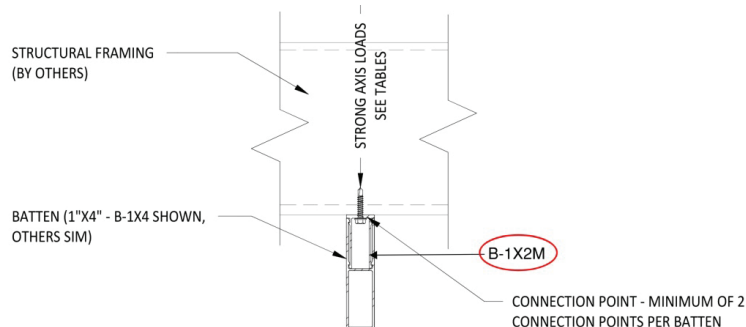
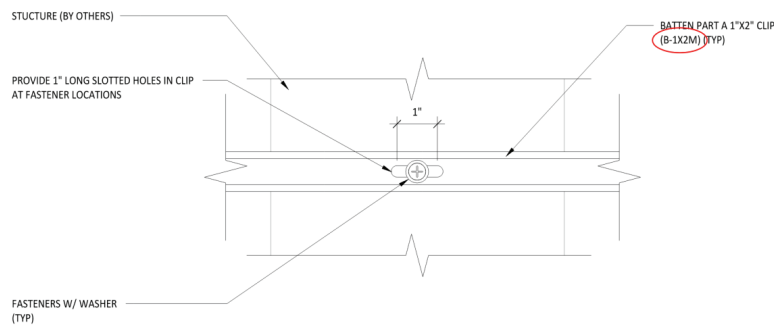
Colors:

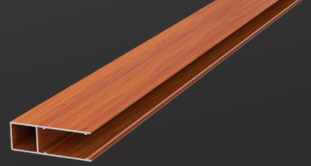
37+ Woodgrain Colors, 13+ Solid Colors

Custom color creation + color matching available



B-1x2M mates with any
1" Batten Female 1x3,
1x4 or 1x6





1" X 3" BATTEN FEMALE B-1X3F STOCK ITEM

General Specifications:

Imperial Size:
1" x 3" x 20'

Material Thickness:
0.059" / 1.5mm

Applications:
Facades / Screening / Pergola

Extrusion Weight:
11.36 lbs

Weight per LF:
0.568 lbs

Case Qty:
54x Pieces

Features:

Assembly:

Two-Piece Profile(s) and End Cap(s)

Install Orientations:

Horizontal, Vertical, Diagonal

Dimensions:

20' Standard Production Lengths

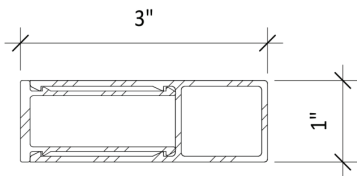
Design:

Two-Piece, Male + Female Tubes w/ concealed fasteners

Colors:

37+ Woodgrain Colors, 13+ Solid Colors

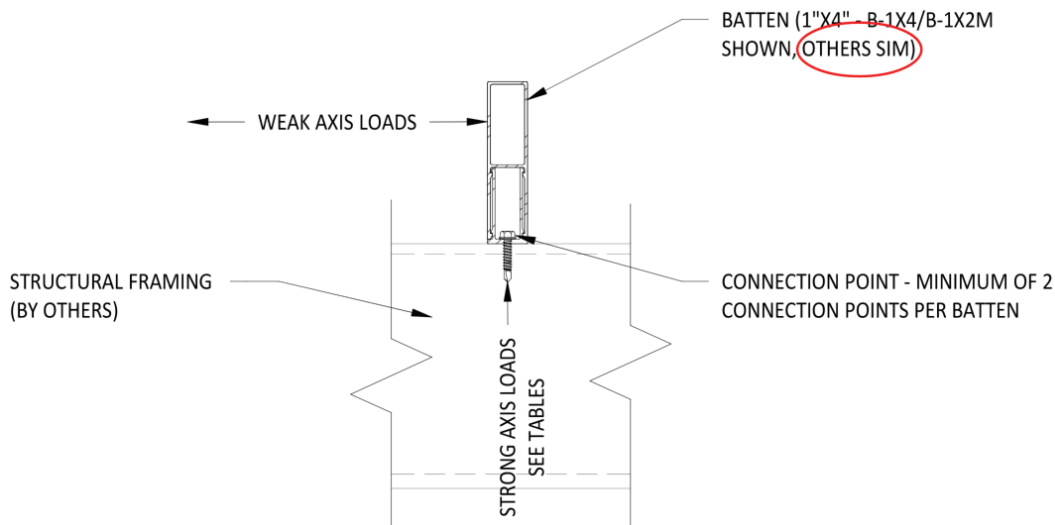
Custom color creation + color matching available

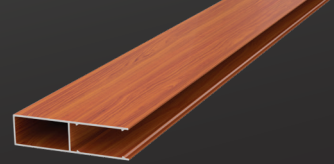


B-1x3F mates with 1" Batten Male B-1x2M



| | |
|--------|--|
| B-1X2M | |
| B-1X3 | |
| B-1X4 | |
| B-1X6 | |





1" X 4" BATTEN FEMALE B-1X4F STOCK ITEM

General Specifications:

Imperial Size:
1" x 4" x 20'

Material Thickness:
0.071" / 1.8mm

Applications:
Facades / Screening / Pergola

Extrusion Weight:
15.82 lbs

Weight per LF:
0.791 lbs

Case Qty:
30x Pieces

Features:

Assembly:

Two-Piece Profile(s) and End Cap(s)

Install Orientations:

Horizontal, Vertical, Diagonal

Dimensions:

20' Standard Production Lengths

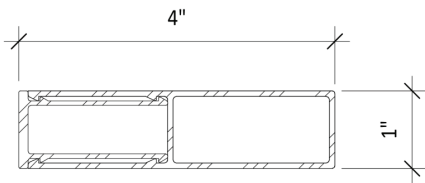
Design:

Two-Piece, Male + Female Tubes w/ concealed fasteners

Colors:

37+ Woodgrain Colors, 13+ Solid Colors

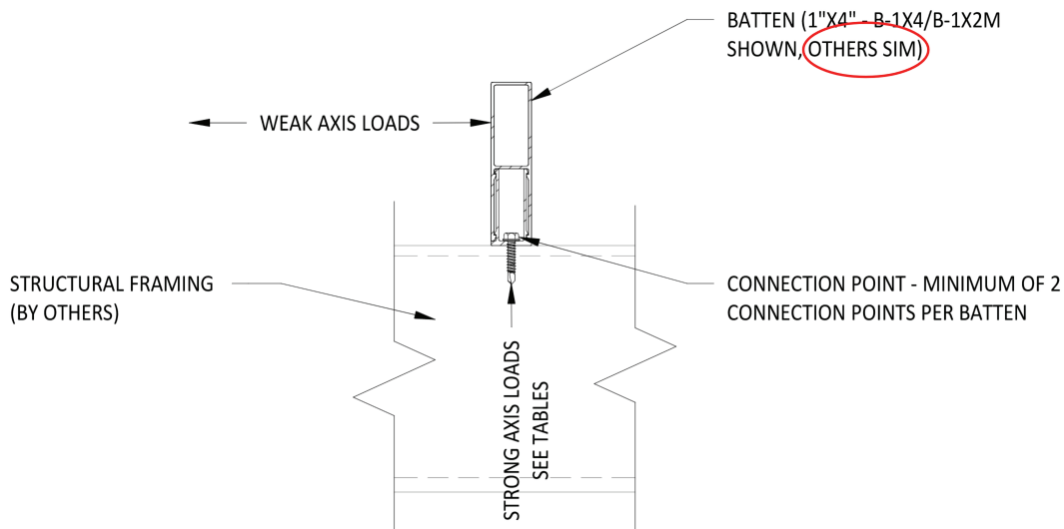
Custom color creation + color matching available



B-1x4F mates with 1" Batten Male B-1x2M



| | |
|--------|--|
| B-1X2M | |
| B-1X3 | |
| B-1X4 | |
| B-1X6 | |





1" X 6" BATTEN FEMALE B-1X6F STOCK ITEM

General Specifications:

Imperial Size:
1" x 6" x 20'

Material Thickness:
0.071" / 1.8mm

Applications:
Facades / Screening / Pergola

Extrusion Weight:
22.66 lbs

Weight per LF:
1.133 lbs

Case Qty:
24x Pieces

Features:

Assembly:

Two-Piece Profile(s) and End Cap(s)

Install Orientations:

Horizontal, Vertical, Diagonal

Dimensions:

20' Standard Production Lengths

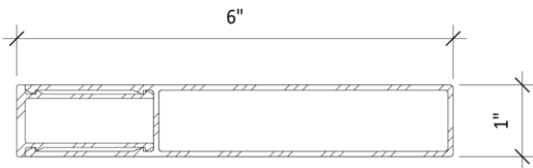
Design:

Two-Piece, Male + Female Tubes w/ concealed fasteners

Colors:

37+ Woodgrain Colors, 13+ Solid Colors

Custom color creation + color matching available



B-1x6F mates with 1" Batten Male B-1x2M



| | |
|--------|--|
| B-1X2M | |
| B-1X3 | |
| B-1X4 | |
| B-1X6 | |

